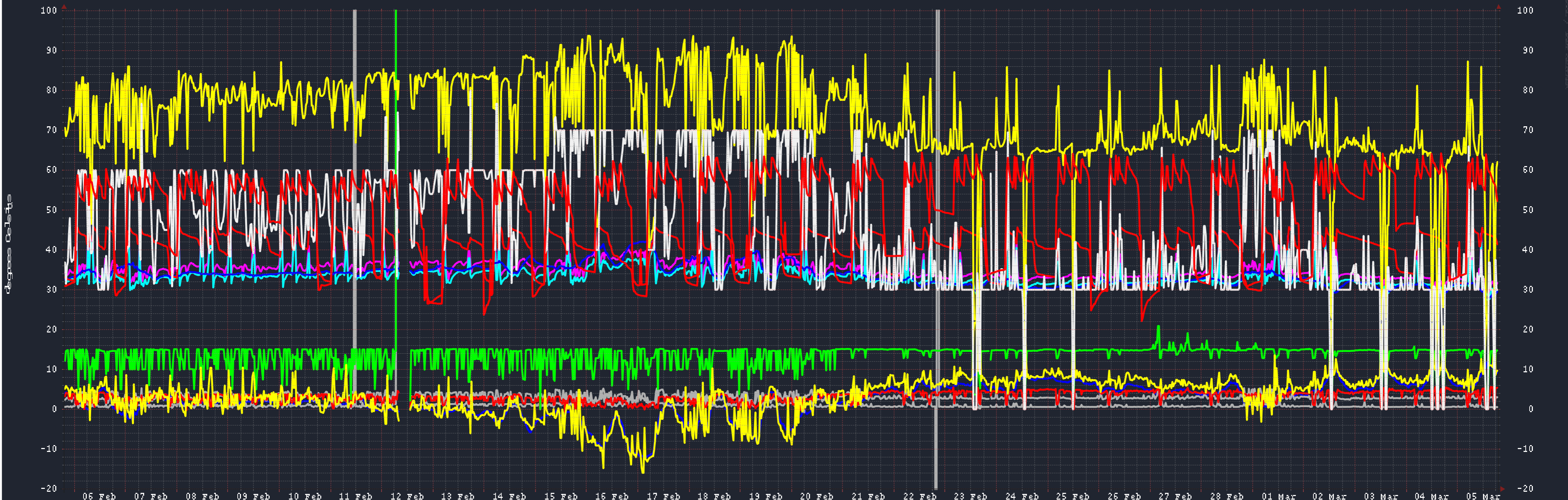


All temperature sensors : last month (5 minute samples)



outdoor	Min: -11.93	Max: 11.98	Average: 2.19	Current: 9.13 degrees Celsius
forward	Min: 27.53	Max: 44.80	Average: 35.29	Current: 31.68 degrees Celsius
return	Min: 27.33	Max: 43.08	Average: 33.40	Current: 29.92 degrees Celsius
Heatcompensate_setp	Min: 27.81	Max: 42.16	Average: 33.69	Current: 29.52 degrees Celsius
powerconsumption	Min: -778.00	Max: 7675.49	Average: 17.78	Current: 0.56 kW
outputpower	Min: -0.80	Max: 35385.23	Average: 65.43	Current: 3.03 kW
efficiency	Min: -0.79	Max: 5.62	Average: 3.11	Current: 5.43
flow	Min: 0.00	Max: 105592.89	Average: 224.53	Current: 14.76
hotwater level 1	Min: 26.50	Max: 46.07	Average: 39.89	Current: 41.40 degrees Celsius
coil temp	Min: -15.95	Max: 22.45	Average: 3.42	Current: 9.70 degrees Celsius
exhaust gas	Min: 20.68	Max: 93.72	Average: 72.95	Current: 62.07 degrees Celsius
compressor_frequency	Min: 0.00	Max: 80.00	Average: 45.19	Current: 30.00 Hz
hotwater level 2	Min: 22.12	Max: 64.43	Average: 50.54	Current: 52.27 degrees Celsius